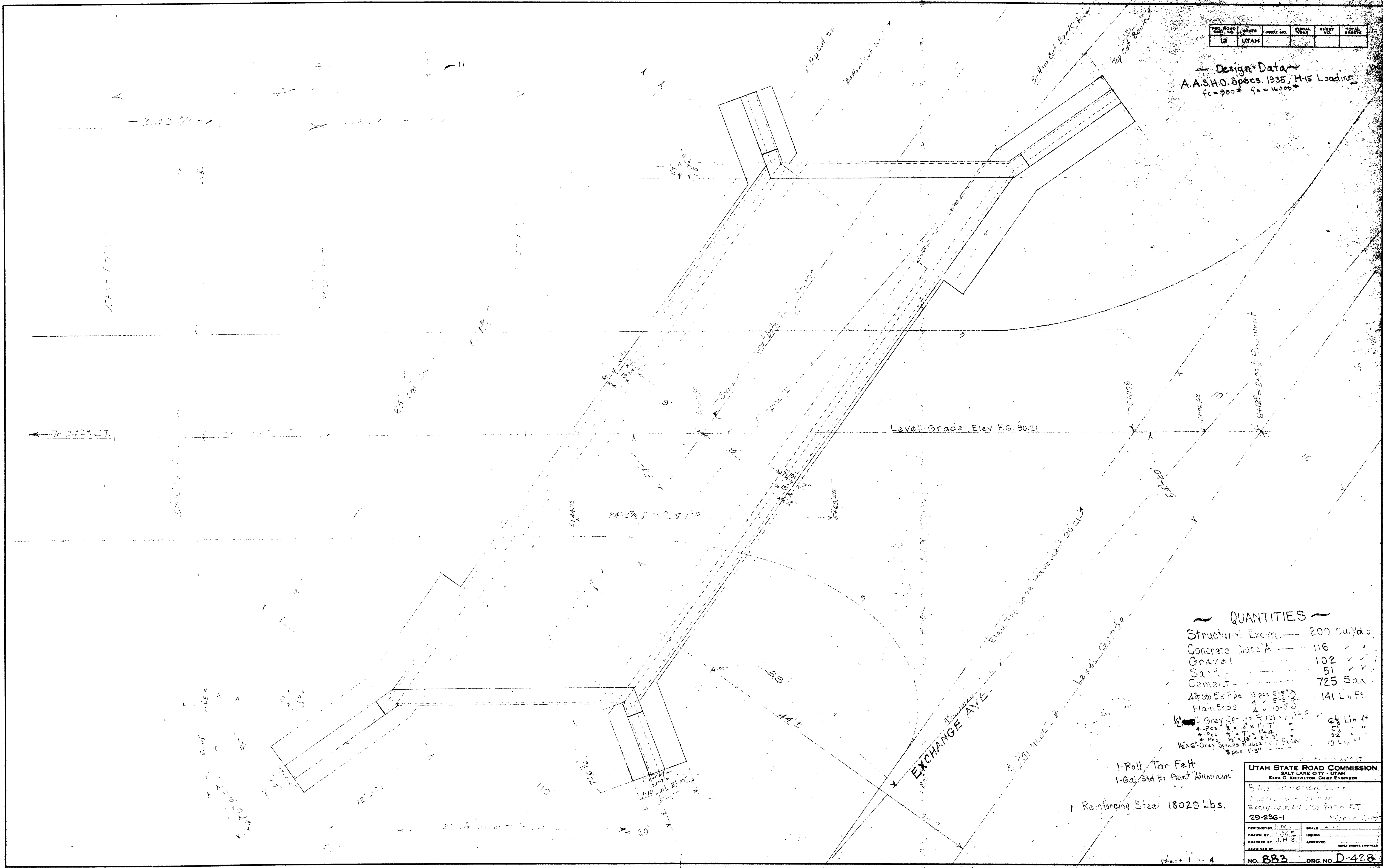


PROJ. ROAD DIST. NO.	SHEET NO.	FISCAL YEAR	SHEET NO.	TOTAL SHEETS
12	UTAH			

Design Data
 A.A.S.H.O. Specs. 1935, H-15 Loading
 $f_c = 900 \#$ $f_s = 16,000 \#$

REVISIONS	DATE	BY



QUANTITIES

Structural Excess	200 cu yds
Concrete Class A	116
Gravel	102
Sand	51
Cement	725 Sax
4" x 8" Br Pps	12 pcs 6'-8"
4" x 8" Br Pps	4 x 5'-3"
4" x 8" Br Pps	4 x 10'-0"
1/2" Grey Sp. in	6 1/2 Lin Ft
4" x 8" Grey Sp. in	32
1/2" x 6" Grey Sp. in	10 Lin Ft

1-Roll Tar Felt
 1-Gal. Std Br Paint Aluminum
 1-Reinforcing Steel 18029 Lbs.

UTAH STATE ROAD COMMISSION
 SALT LAKE CITY - UTAH
 EZRA C. KNOWLTON, CHIEF ENGINEER

DESIGNED BY: J.H.E.
 DRAWN BY: J.H.E.
 CHECKED BY: J.H.E.
 EXAMINED BY:

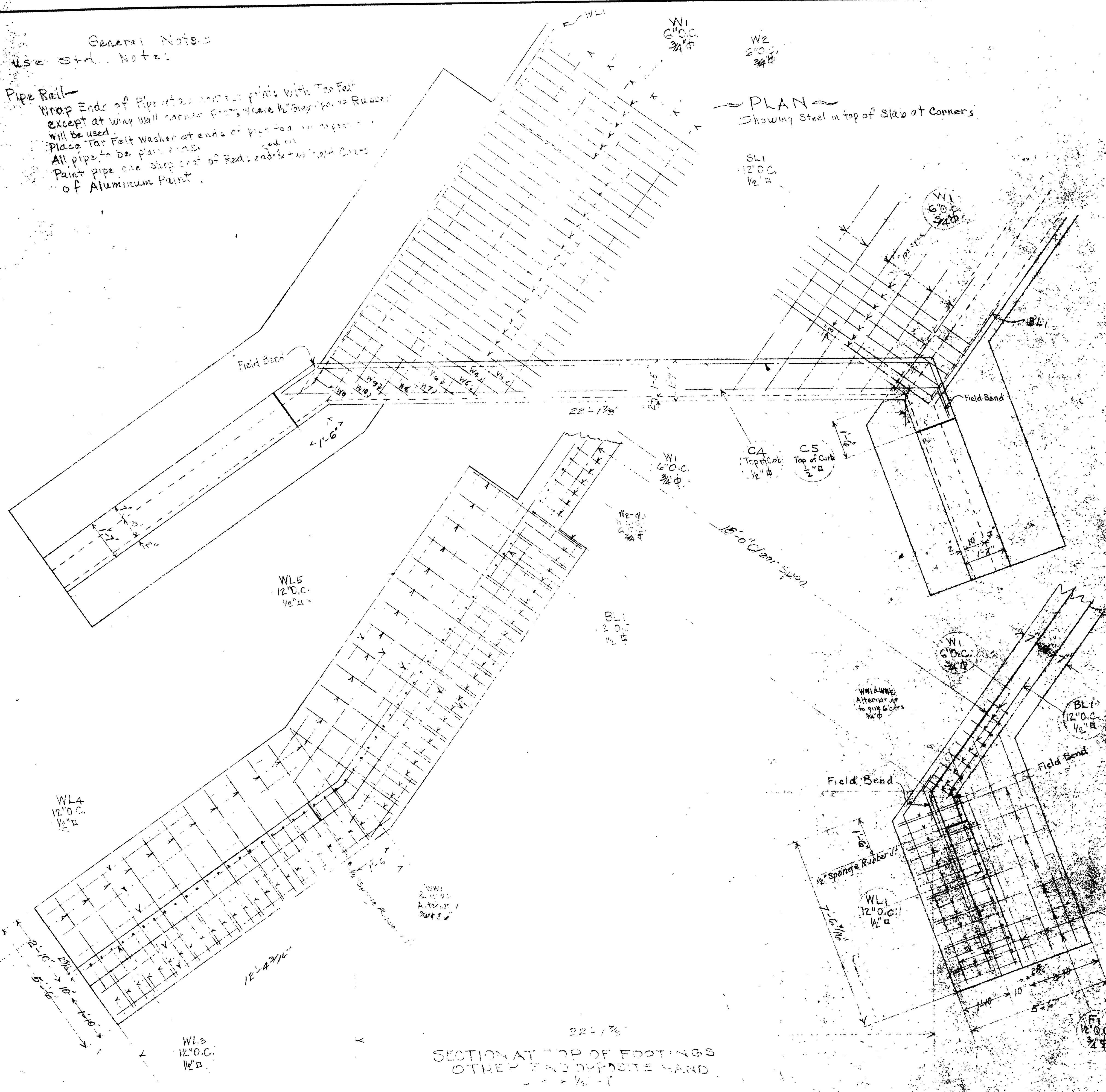
SCALE: AS SHOWN
 INCHES TO FEET

NO. 883 ORG. NO. D-428

General Notes:
Use Std. Notes:

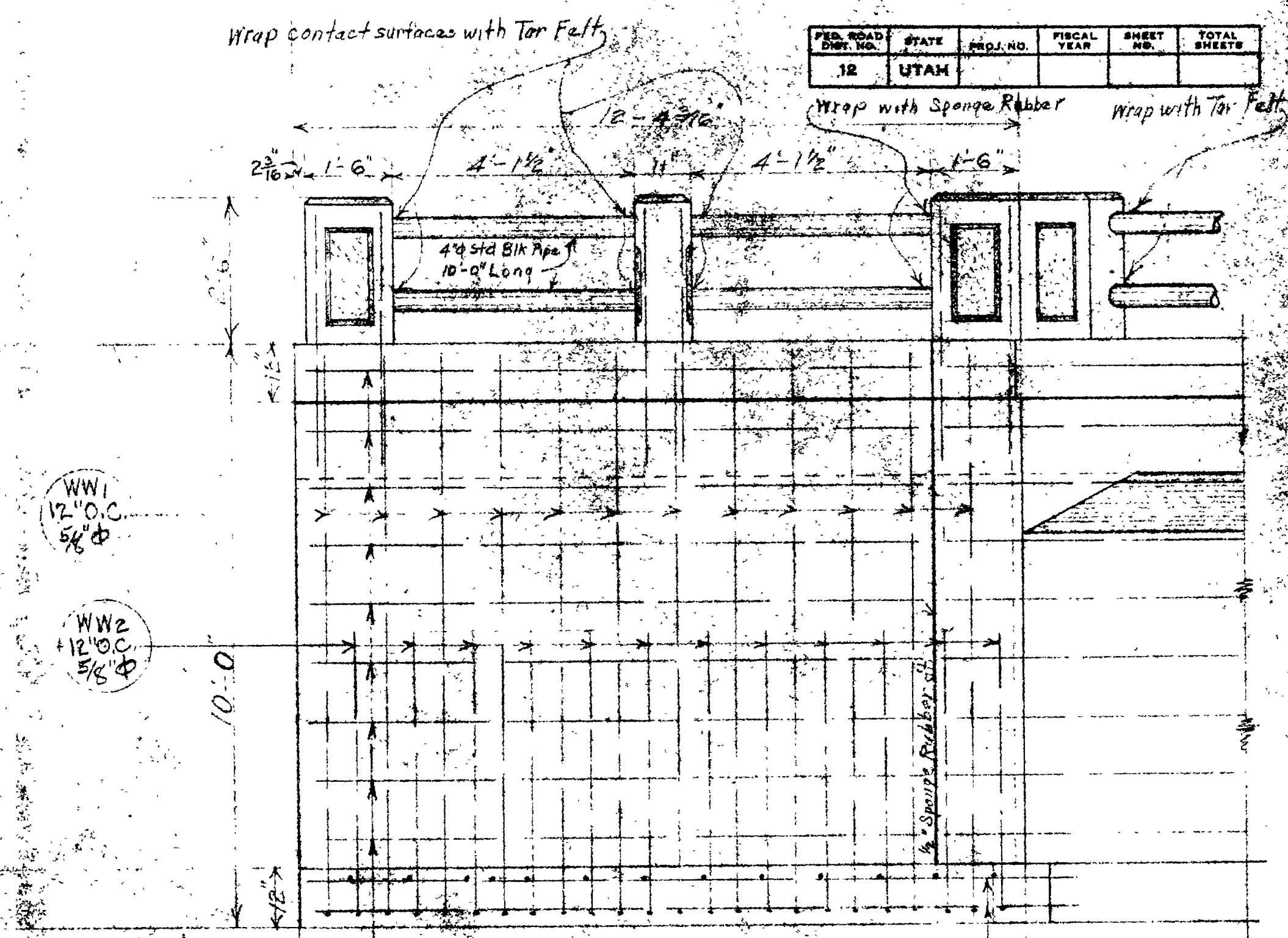
Pipe Rail
Wrap Ends of Pipe at all contact points with Tar Felt
except at wing wall corner posts, where 1/2" Strip of Rubber
will be used.
Place Tar Felt Washer at ends of pipe for expansion
All pipe to be plain ends.
Paint pipe one strip east of feet and set as field curb
of Aluminum Paint.

PLAN
Showing Steel in top of Slab at Corners

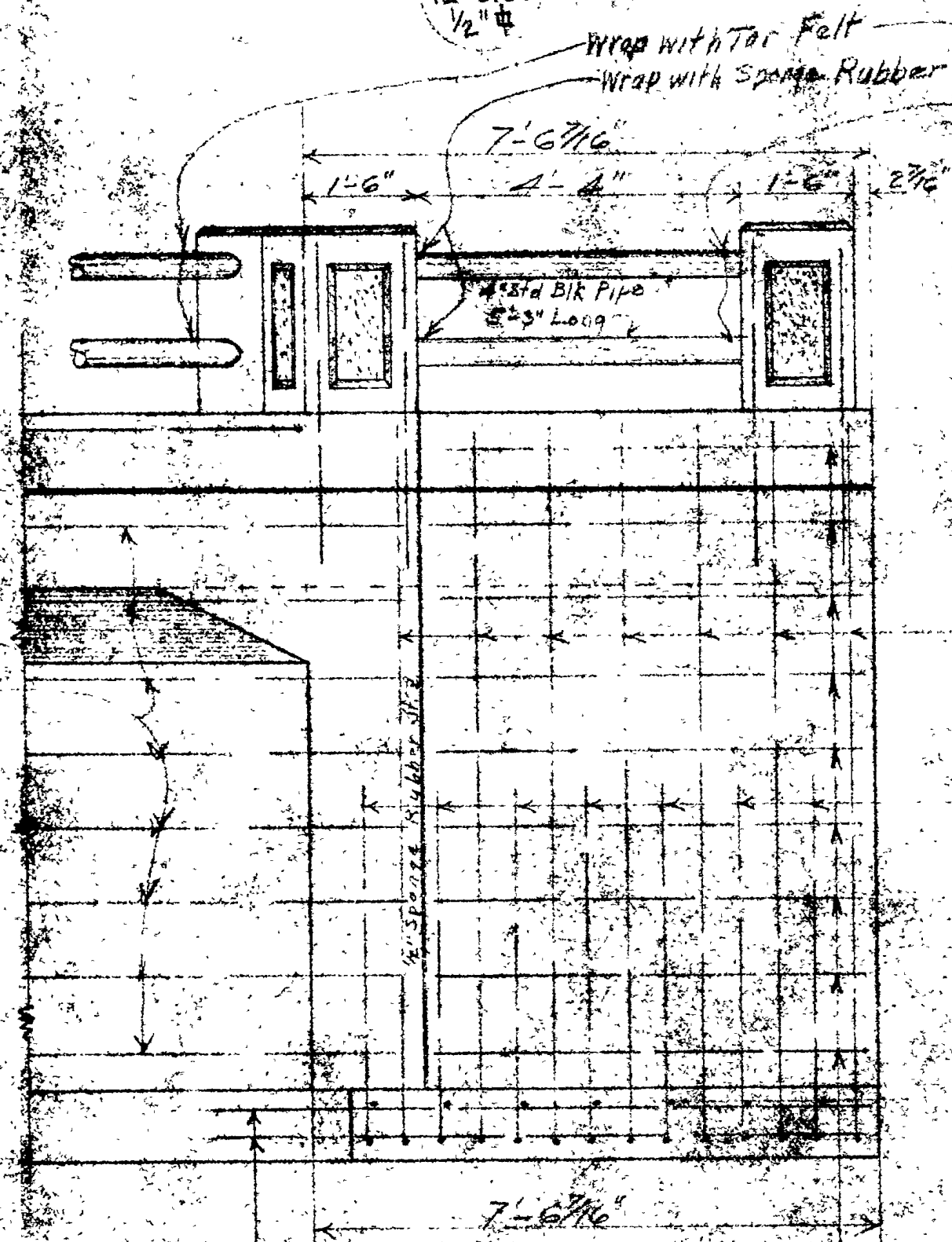


**SECTION AT TOP OF FOOTINGS
OTHER END OPPOSITE HAND**

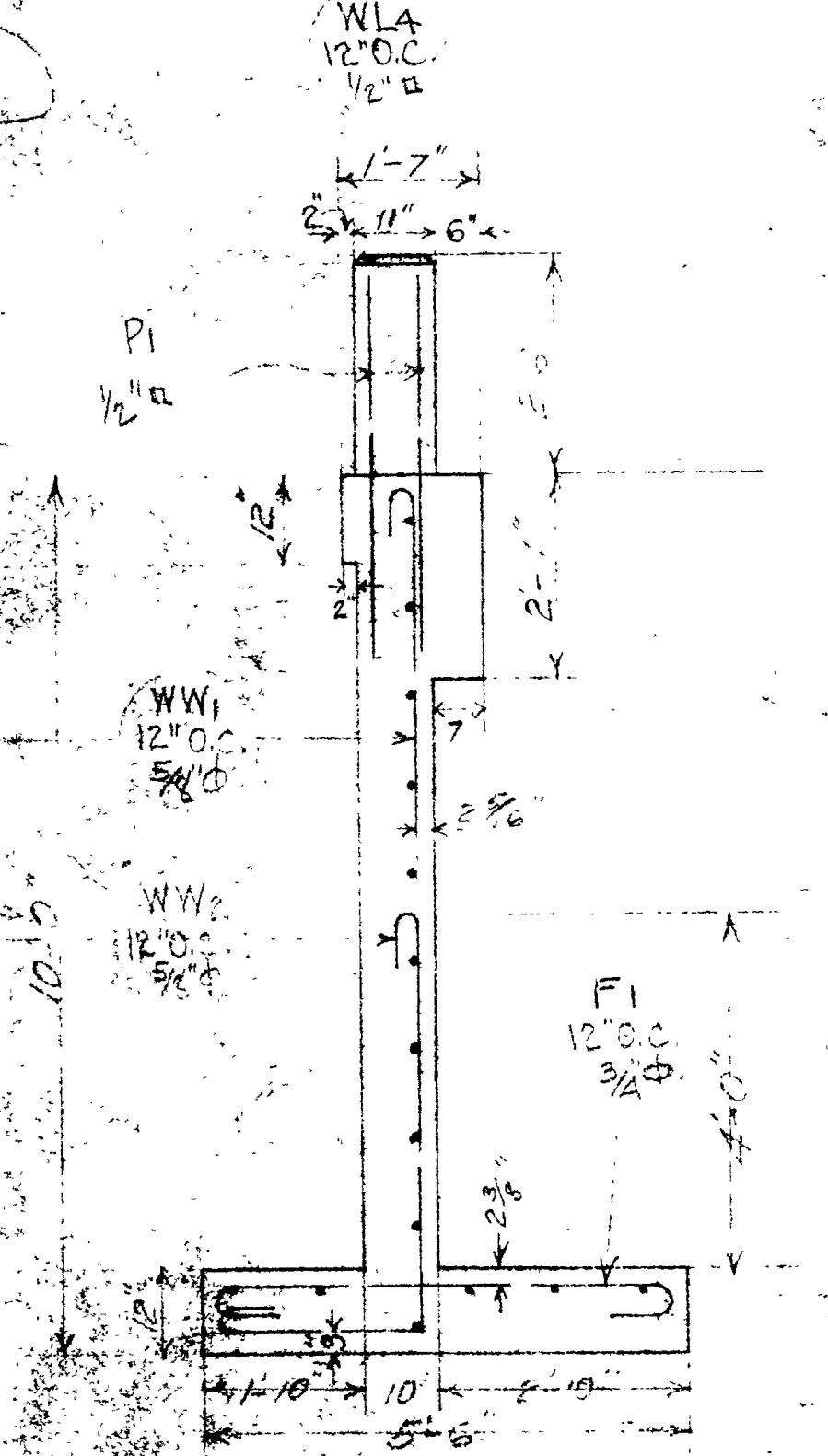
FED. ROAD DIST. NO.	STATE	PROJ. NO.	FISCAL YEAR	SHEET	TOTAL SHEETS
12	UTAH				



FRONT ELEV. LONG WINGS



FRONT ELEV. SHORT WINGS



END ELEVATION & SECTION ALL WINGS

REVISIONS	DATE	BY

Sheet 2 of 4

UTAH STATE ROAD COMMISSION
SALT LAKE CITY - UTAH
K. C. WRIGHT - CHIEF ENGINEER

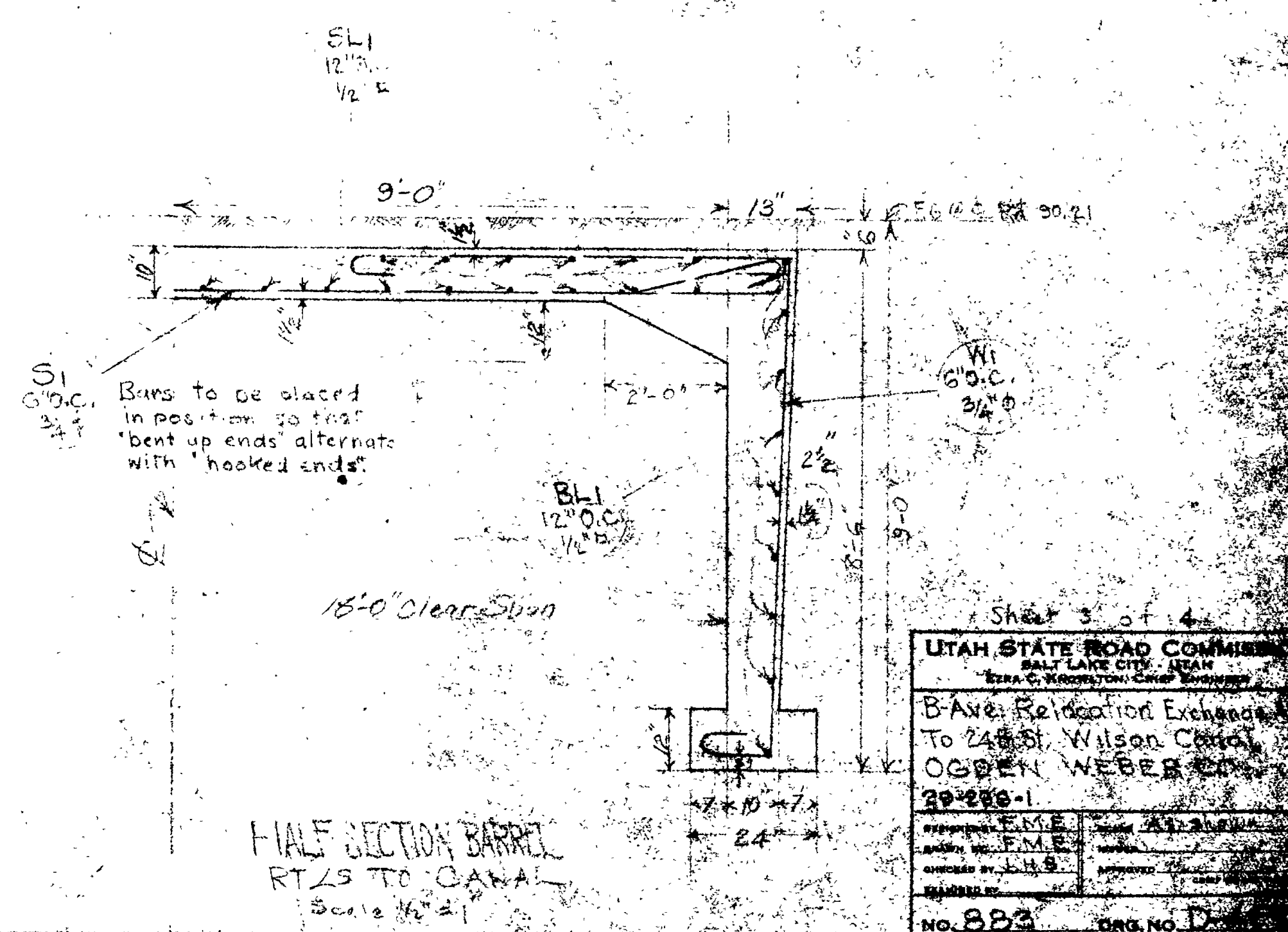
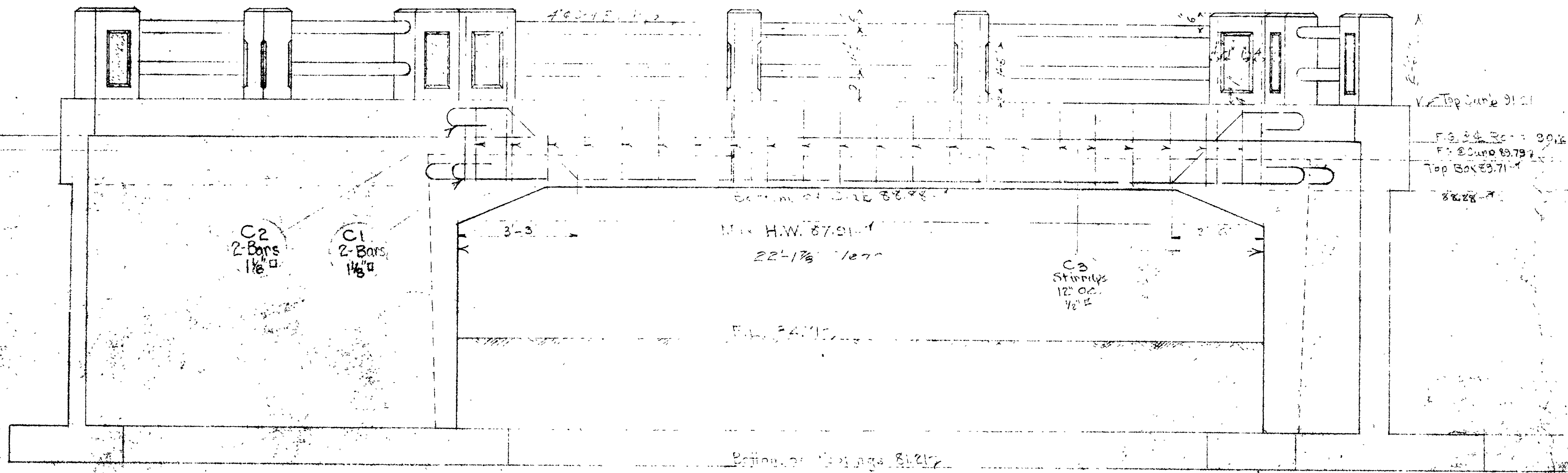
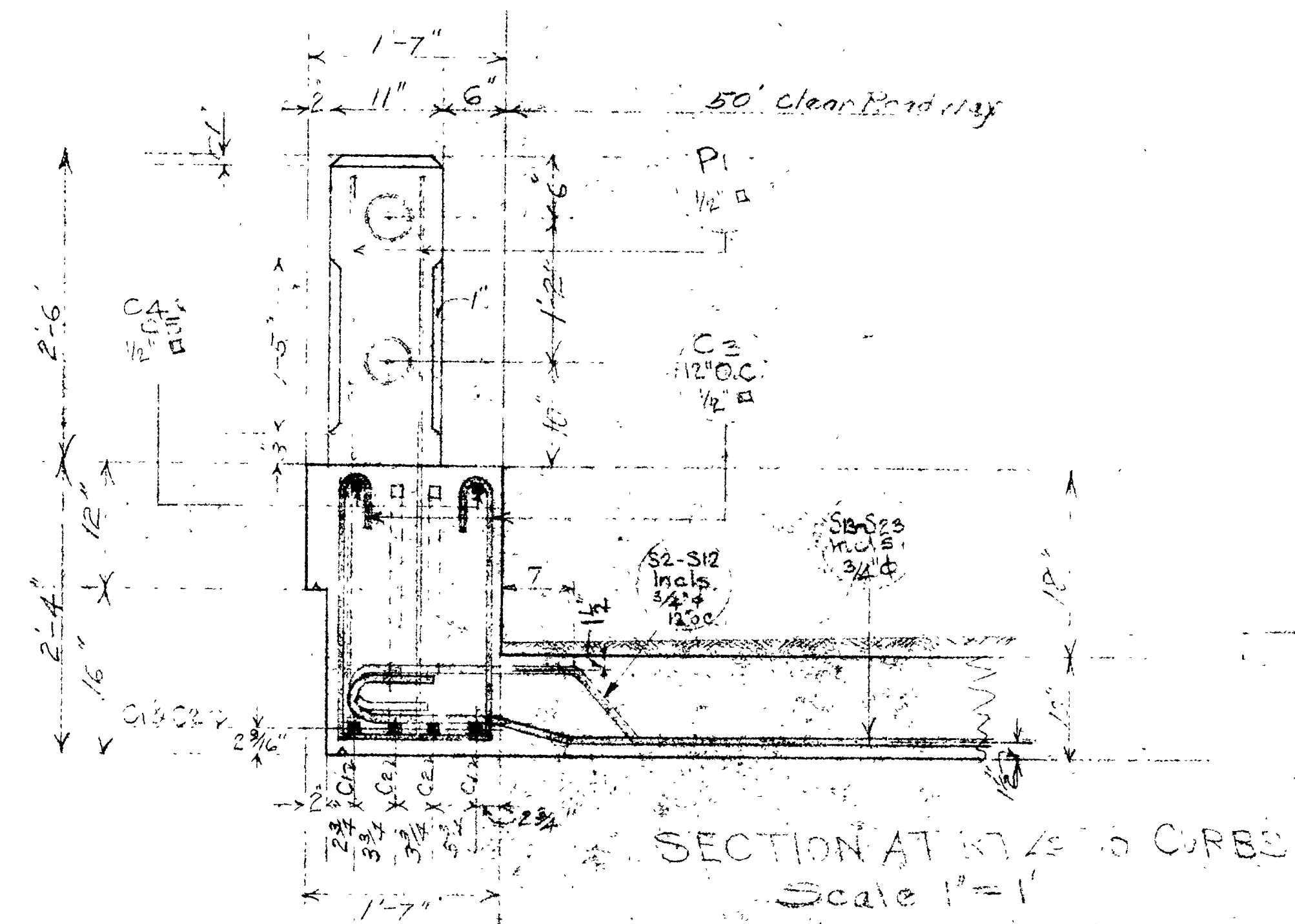
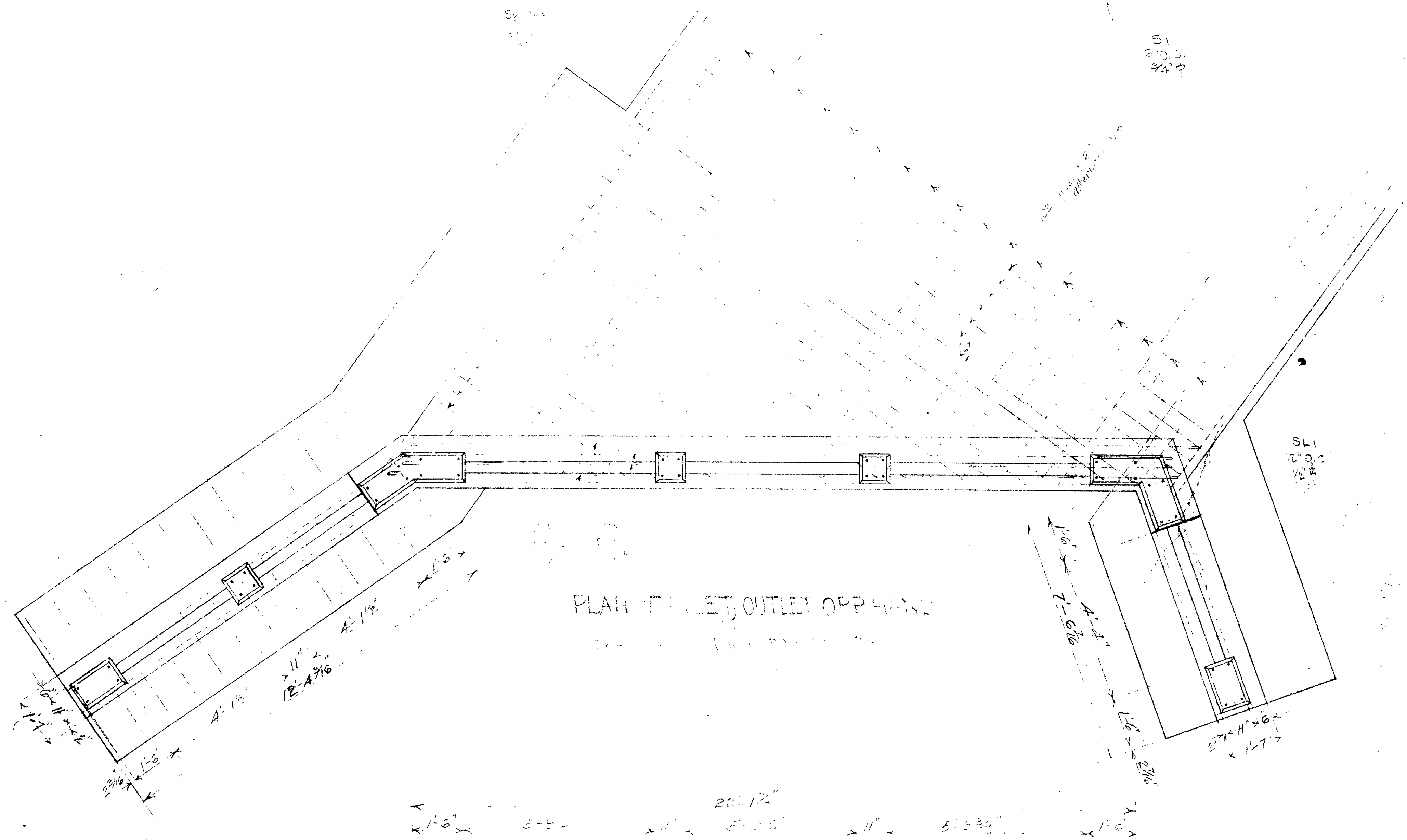
**B-Ave. Relocation Exchange Ave.
To 24th St. Wilson Canal
Ogden Weber Co.**
20-286-1

DESIGNED BY: F.M.E.	SCALE: 1/2" = 1'
DRAWN BY: F.M.E.	ISSUED:
CHECKED BY: J.H.B.	APPROVED:
EXAMINED BY:	DATE:

BRIDGE NO. 883 DRG. NO. D-426

FED. ROAD DIST. NO.	STATE	PROJ. NO.	FISCAL YEAR	SHEET NO.	TOTAL SHEETS
12	UTAH				

REVISIONS	
DATE	BY



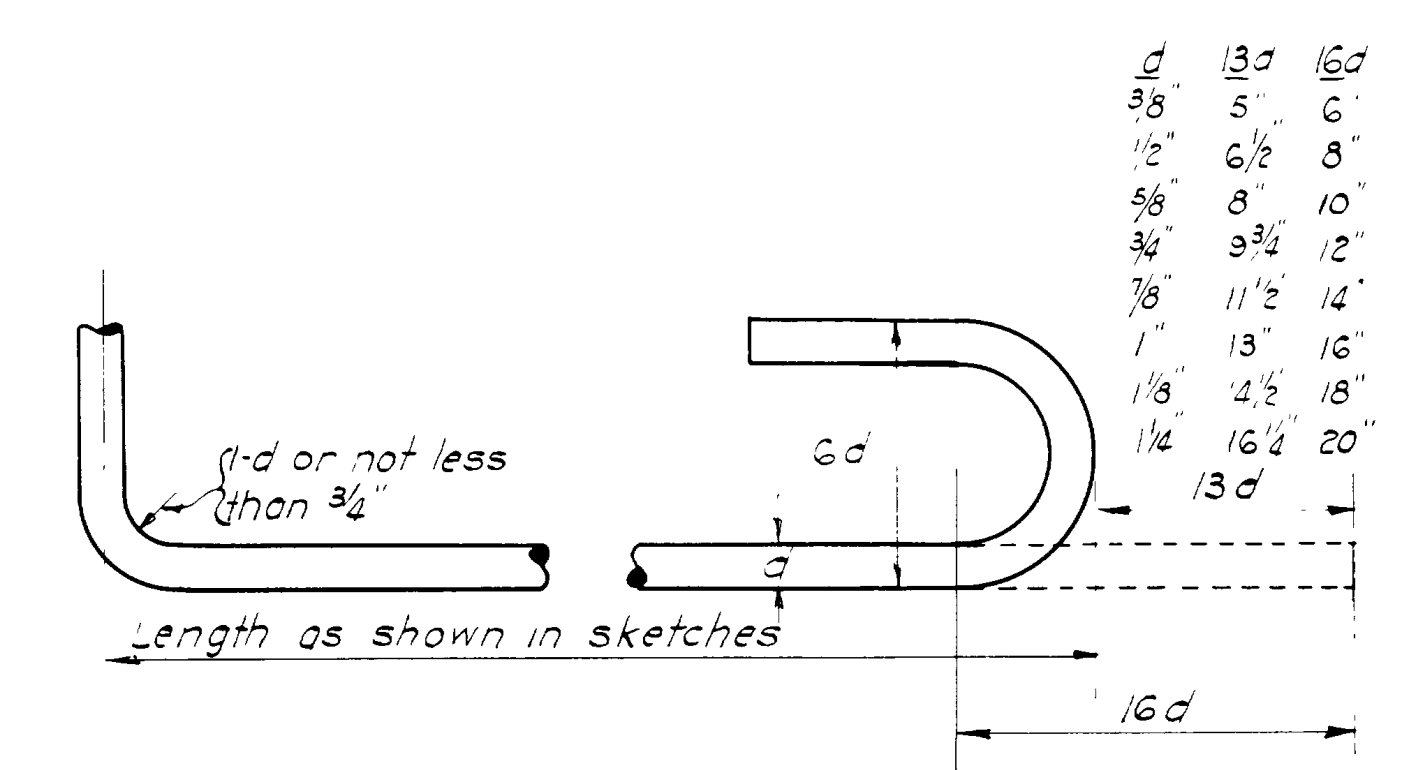
Sheet 3 of 4
UTAH STATE ROAD COMMISSION
 SALT LAKE CITY, UTAH
 B-AXE Relocation Exchange
 To 245 St. Wilson Canal
 OPEN WEBER CANAL
 29-280-1
 No. 888

MARK	LOCATION	SIZE	LGTH.	NO. BARS	TOTAL LENGTH	SKETCH	O.B.O.
S1	Slab (Bottom)	3/4"	21'-4"	103	2197'-4"		19'-8"
S2	" (Ends)		20'-6"	2	41'-0"		8'-1"
S3	"		19'-	2	38'-2"	Ditto but A=13'-5" B=11'-1"	17'-2"
S4	"		17'-9"	2	35'-6"	" A=12'-" B=9'-9"	5'-0"
S5	"		16'-4"	2	32'-8"	" A=10'-8" B=8'-4"	4'-5"
S6	"		15'-0"	2	30'-0"	" A=9'-3" B=6'-11"	3'-0"
S7	"		13'-6"	2	27'-0"	" A=7'-10" B=5'-6"	11'-7"
S8	"		12'-2"	2	24'-4"	" A=6'-6" B=4'-2"	10'-3"
S9	"		10'-9"	2	21'-6"	" A=5'-1" B=2'-9"	9'-10"
S10	"		9'-2"	2	18'-4"		7'-6"
S11	"		7'-8"	2	15'-4"	Ditto but A=2'-0" B=0'-6"	6'-0"
S12	"		6'-5"	2	12'-10"		4'-8"
S13	"		19'-6"	2	39'-0"	Ditto but A=3'-2"	17'-1"
S14	"		18'-2"	2	36'-4"	" A=2'-0"	6'-6"
S15	"		16'-10"	2	33'-8"	" A=10'-7"	13'-9"
S16	"		15'-3"	2	30'-0"	" A=9'-0"	12'-4"
S17	"		14'-0"	2	28'-0"	" A=7'-9"	10'-1"
S18	"		12'-6"	2	25'-0"	" A=6'-4"	9'-6"
S19	"		11'-2"	2	22'-4"	" A=5'-0"	8'-2"
S20	"		9'-0"	2	18'-0"	" A=3'-7"	6'-9"
S21	"		8'-5"	2	17'-0"	" A=2'-2"	5'-4"
S22	"		7'-0"	2	14'-0"	" A=0'-9"	3'-11"
S23	"		5'-6"	2	11'-0"	"	

MARK	LOCATION	SIZE	LGTH.	NO. BARS	TOTAL LENGTH	SKETCH	O.B.O.
SL	Slab Top & Bottom	1/2"	35'-6"	20	2010'-0"		
BL2	Sidewalls (Barrel)	1/2"	35'-0"	36	2310'-0"		
W1	"	3/4"	18'-0"	206	3708'-0"		
W2	"	3/4"	13'-2"	18	920'-0"	Ditto but A=2'-2" B=7'-3"	
W3	"	3/4"	8'-9"	2	37'-6"	" A=2'-2" B=6'-10"	
W4	"	3/4"	8'-0"	2	36'-0"	" A=2'-2" B=6'-1"	
W5	"	3/4"	7'-3"	2	34'-6"	" A=2'-2" B=5'-4"	
W6	"	3/4"	6'-8"	2	33'-4"	" A=2'-2" B=4'-9"	
W7	"	3/4"	5'-0"	2	37'-8"	" A=2'-2" B=3'-11"	
W8	"	3/4"	5'-3"	2	30'-6"	" A=2'-2" B=3'-4"	
W9	"	3/4"	4'-6"	2	29'-0"	" A=2'-2" B=2'-7"	
W10	"	3/4"	3'-0"	2	27'-8"	" A=2'-2" B=1'-11"	
W11	"	3/4"	13'-2"	2	26'-4"	" A=2'-2" B=1'-3"	
C1	Curb (Bottom)	1/8"	20'-7"	4	106'-4"		24'-2"
C2	"	1/8"	27'-5"	4	109'-8"		23'-5"
C3	" (Sillings)	1/8"	6'-4"	4	278'-8"		
C4	Curb (Top)	1/8"	23'-3"	2	52'-6"		
C5	"	1/8"	27'-3"	2	54'-6"		

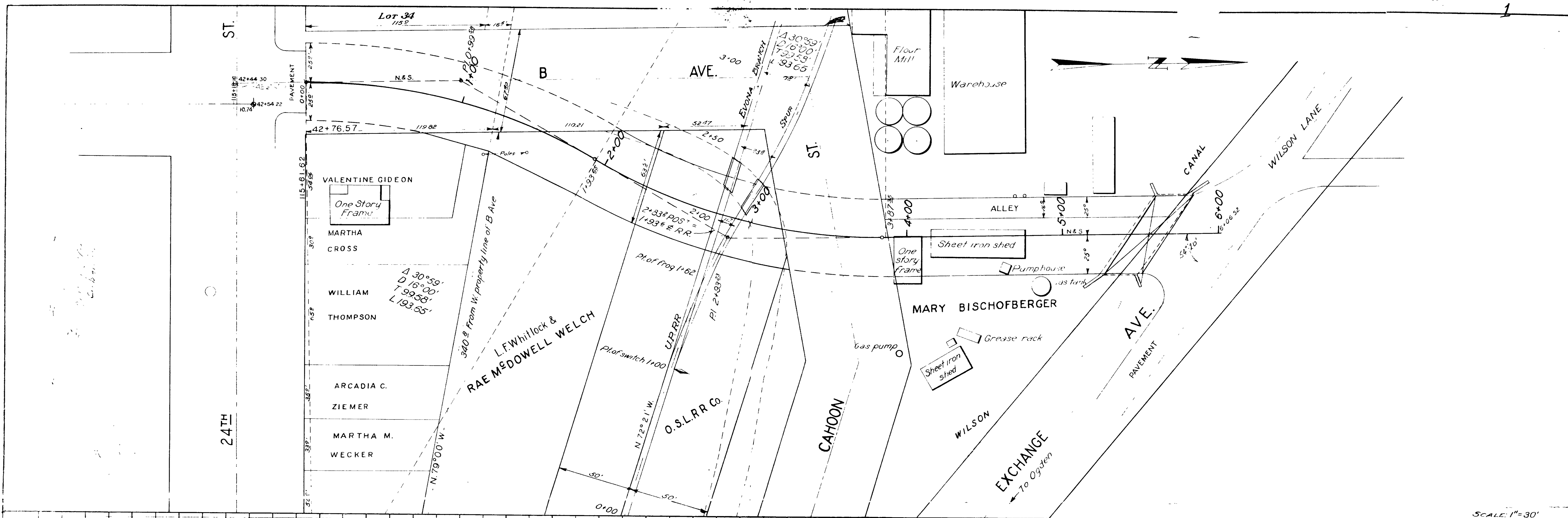
MARK	LOCATION	SIZE	LGTH.	NO. BARS	TOTAL LENGTH	SKETCH	O.B.O.
WL1	Short Wing Wall	1/2"	5'-9"	18	103'-6"		
WL2	Fig. Short "	1/2"	8'-6"	12	102'-0"		
WL3	Long "	1/2"	10'-6"	18	189'-0"		
WL4	Fig. Lg "	1/2"	13'-0"	12	156'-0"		
WL5	" End of Barrel	1/2"	8'-6"	12	162'-0"		
WW1	Verticals, All Wing	3/4"	13'-0"	38	494'-0"		
WW2	" " "	3/4"	8'-3"	38	313'-6"	Ditto but A=4'-9"	
P1	Handrail Posts	1/2"	4'-6"	72	324'-0"		
F1	Figs. Wing Walls	3/4"	6'-8"	64	426'-8"		5'-0"

4692'-2" of 1/2" @ .85#/Lin Ft. = 4073.34
 807'-6" of 3/8" @ 1.043 " = 842.22
 8111'-10" of 3/4" @ 1.502 " = 12183.97
 264'-0" of 1/8" @ 4.303 " = 929.25
 Total = 18028.98 #



ROD NOTES
 When hooks are called for the lengths given in the Total Length column include allowance for hooks as shown in above detail.
 Lengths given in sketches are center to center of bend points.

REVISIONS
 DATE BY



SCALE: 1"=30'

